



Operating & Setup Instructions

LED Multisport Scoreboard

The Proto Electronics full panel LED scoreboard is suited to a variety of indoor sports. The main scoreboard has configurable games, team names and can display messages and images.



The scoreboard is provided with three wireless remote controls including a main game, shot-clock and text remote.



Game Remote

The game remote is used to control the scoreboard during the game, start and stop the clock and to modify the displayed score. The game remote is also used to configure the scoreboard parameters that are specific to the rules of the game to be played. Note: in basketball mode pressing the CLK Start will also change the possession arrow direction.

Shot-clock Remote

The shot-clock remote is used when basketball is played. It is used to start and reset the shot clocks. Note that the shot-clocks will stop when the main game timer is stopped.

Alpha-numeric Remote

This remote is used to configure team names.

Games Selection

- a) Turn on the scoreboard and wait until the scoreboard display is visible.
- b) Press EDIT on the Game Remote. Team A and Team B names (up to 9 characters long) can be chosen from one of the 0 - 99 internally preconfigured names. Use the UP/DOWN arrows on the Game Remote to select the team names for each side.
- c) Press EDIT again to select the required game configuration eg Basketball 1, Netball 1, Volleyball 1 etc
- d) Note: Game configurations select a preconfigured game with defined period times and intervals. These values may be viewed and amended through repeated use of the EDIT key (see Game Editing).
- e) Press SELECT/RESET to save any amended parameters and return to the scoreboard mode.

When the Game Clock is paused

- a) With the exception of the Volleyball scoreboard, you can adjust the game clock by pressing the Game Remote EDIT key. The time will then flash and you can edit the minutes using the red UP/DOWN and the seconds using the green UP/DOWN. When the desired time is set press edit again.

Time Of Day Clock/Graphics

- a) Whenever the Game Clock is not running, repeated pressing of the Game Remote CLOCK button, or the Alpha-numeric Remote SLIDE SHOW button, will cycle between the Scoreboard display, the Time Of Day Clock and the Enhanced Media mode.

Resetting the Scoreboard

- a) To reset the scoreboard, stop the Game Clock (if running) and press RESET GAME 3 times in succession.

Game Editing

Using the Game Remote:

- a) Stop the Game Clock (if running).
- b) Press SELECT/RESET 3 times in succession.
- c) Repeatedly press EDIT to get to the required option & use the up/down arrow keys to change pre-set options.
- d) Press EDIT to move to next option, or press SELECT/RESET to save and exit.

Edit Team Names

Using the Game Remote:

- a) Stop the Game Clock (if running).
- b) Press SELECT/RESET 3 times in succession.

Using the alpha numeric remote:

- c) Press EDIT
- d) Select memory location number (0 – 99) using the number keys.
- e) Press EDIT.
- f) Use backspace to remove existing name, then type the new name using alphanumeric keys.
- g) Press Slide Show to move to next memory position, or press EDIT to save and exit.

Media Configuration

Enhanced Media

The scoreboard includes a separate enhanced media engine. This allows more complicated images to be displayed, including small animations, videos, and slideshows with fancy transitions.

After applying power to the Scoreboard, the enhanced media engine can also be accessed by twice pressing either the Game Remote CLOCK button, or the Alpha-numeric Remote SLIDE SHOW button.

Configuring the enhanced Media Engine

The majority of Enhanced Media Cards fitted to the scoreboard will either be of type 'A8', 'I5/I5 Enhanced' or 'C10'. If a different card is fitted, please contact Proto Electronics for further instructions.

For the 'A8' card, download LEDSHOWT9 software; for the 'I5' card, download LEDVISION software. Both programs may be downloaded from

<http://www.lednets.com/en/DownList.asp>.

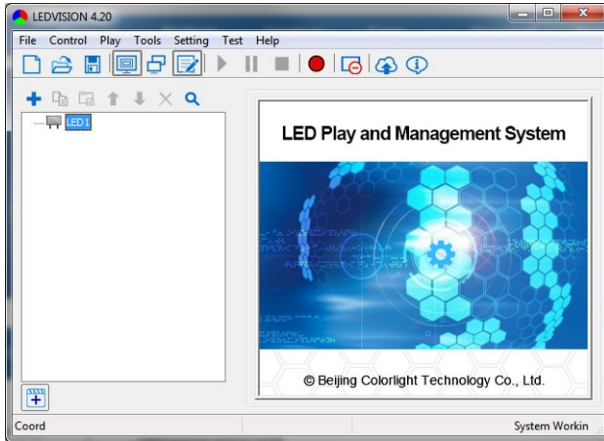
For the C10 card, download LEDEDITOR software.

This program may be downloaded from

<http://sysolution.net/download.html>

LEDVISION

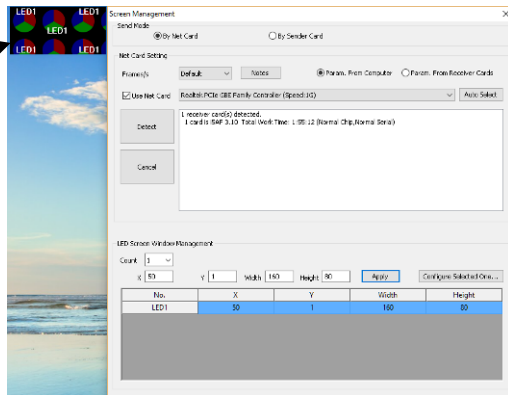
The following instructions refer to version 4.20 of the software, the latest version at time of printing.



To configure the media card follow the following steps:

1. Connect the 'I5/I5 Advanced' media card directly to the laptop Ethernet port (Do not use Ethernet hub or router as software needs a direct connection)
2. Go to *Control->Screen Control*
3. Ensure *Use Net Card* is ticked and click *Detect* button
4. A small image should appear in the top of the screen similar to that below

Image here should match what appears on scoreboard



5. Make the screen resolution match the scoreboard then press *Apply*.

For a P10 Full Panel 192x96 pixel screen, these settings are as follows;

Count = 1, X = 0, Y = 0. Width = 192, Height = 96.

6. Close the screen management dialogue box to return to the Main screen.

7. Right click *LED1* and select *Normal Page* from the page Properties, select *Background picture*->*Please choose a background picture*. Locate the image, logo etc on your computer and select it.

8. The image should now appear on the scoreboard, if the image is cropped ensure the resolution is set correctly (see steps 2-6). If the image is blurred, try and find an image that has the same aspect ratio as the screen and the same resolution.

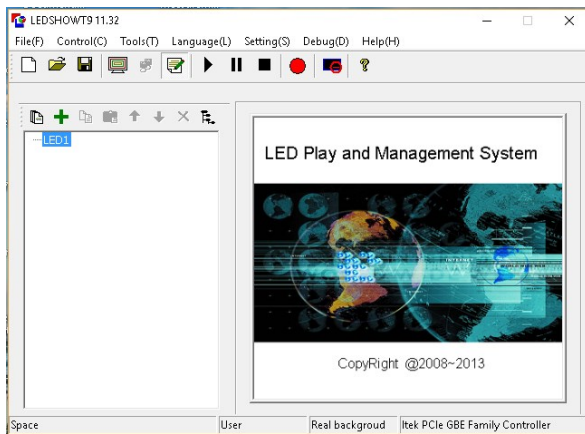
9. The time for the image to be displayed can be entered into the *Play Duration* box.

10. Keep adding images and times by repeating steps 7- 9, once all images are entered press the *blue Play button* on the tool bar to preview the slideshow.

10. Once happy with the images and timing, press the *red Record button*, the slideshow is now loaded into the card and will appear any time Enhanced media is selected from the remote.

LEDSHOWT9

The following instructions refer to version 11.32 of the software, the latest version at time of printing.

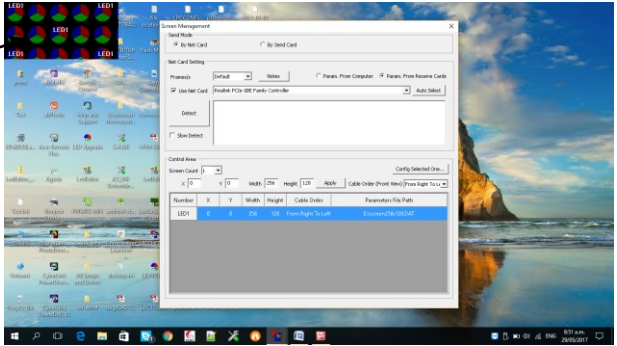


To configure the media card follow the following steps:

1. Connect the 'A8' Advanced media card directly to the laptop Ethernet port (Do not use Ethernet hub or router as software needs a direct connection)
2. Go to *Control->Screen Management*
3. Ensure *Use Net Card* is ticked and click *Detect* button

4. A small image should appear in the top of the screen similar to that below

Image here should match what appears on scoreboard



5. Make the screen resolution match the scoreboard then press *Apply*.

For a P10 Full Panel 192x96 pixel screen, these settings are as follows;

Count = 1, X = 0, Y = 0. Width = 192, Height = 96.

6. Close the screen management dialogue box to return to the Main screen.

7. Right click *LED1* and select *Blank Page*. From the page Properties, select *Back picture*->*Choose a background picture*. Locate the image, logo etc on your computer and select it.

8. The image should now appear on the scoreboard. If the image is cropped ensure the resolution is set correctly (see steps 2-6). If the image is blurred, try and find an image that has the same aspect ratio as the screen and the same resolution.

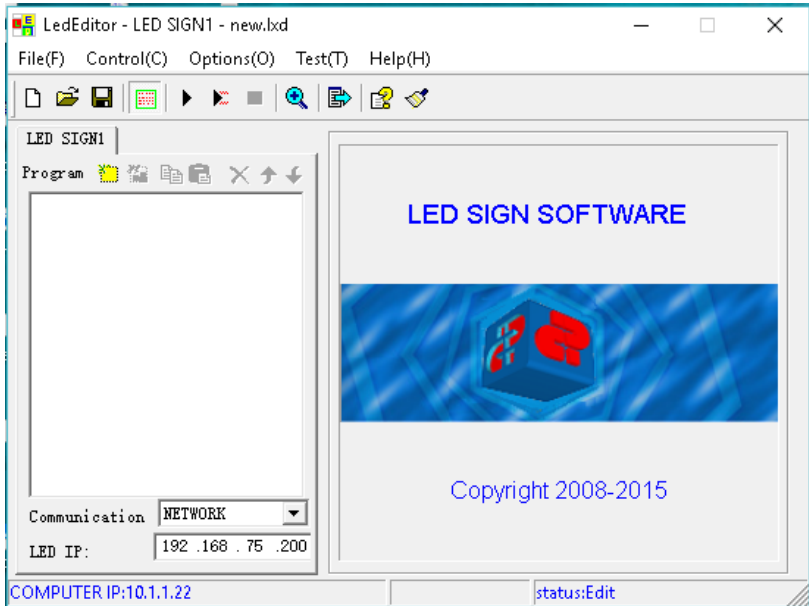
9. The time for the image to be displayed can be entered into the *Play Management* box.

10. Keep adding images and times by repeating steps 7- 9, once all images are entered press the *blue Play button* on the tool bar to preview the slideshow.

10. Once happy with the images and timing, press the *red Record button*, the slideshow is now loaded into the card and will appear any time Enhanced media is selected from the remote.

LEEDITOR

The following instructions refer to version 9 of the software.



To configure the media card follow the following steps:

1. Connect the 'C10' Advanced media card directly to the laptop Ethernet port (Do not use Ethernet hub or router as software needs a direct connection).

2. The program should automatically detect any cards on the network and display their i.p. addresses. Select the appropriate card and press OK.

3. Go to *Option->Software Setup*.

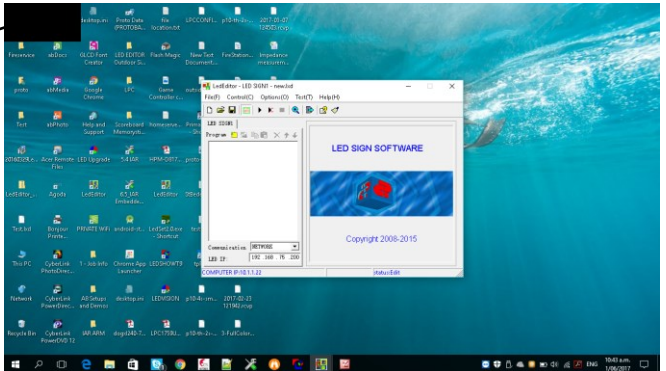
4. Make the Width and Height parameters match the scoreboard resolution:

For a P10 Full Panel: 192 and 96 respectively.

Press OK to return to the main screen once both parameters have been entered.

5. A small image should appear in the top of the screen similar to that below

Image here should match what appears on scoreboard

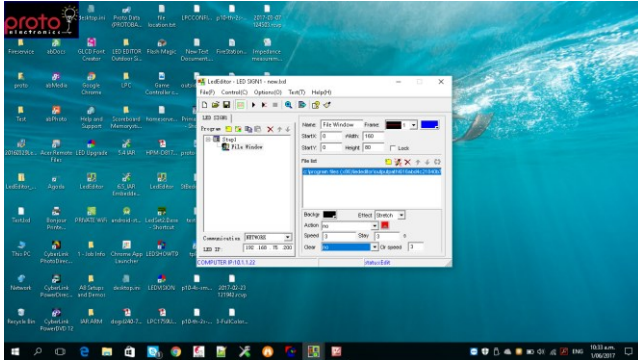


6. Under tab 'LED SIGN1', select the yellow 'step' icon and choose 'Add Step'.

7. Select the yellow icon containing the green, red and white squares and choose 'File Window'. In the File Window, select the yellow icon to add a file to the File List window (locate the desired image, logo etc on your computer and select it).

8. The image should now appear on the display window at the top of the screen. If the image is cropped ensure the

resolution is set correctly (see steps 3-4). If the image is blurred, try and find an image that has the same aspect ratio as the screen and the same resolution.



9. The time for the image to be displayed can be entered into the *Step1 Time* box.

10. Keep adding images and times by repeating steps 6- 9, once all images are entered, press the black 'play' button on the tool bar to preview the slideshow.

10. Once happy with the images and timing, press the blue arrow button on the tool bar, the slideshow is now loaded into the card and will appear any time Enhanced media is selected from the remote.

Please note that these are all third-party software, and are not maintained by Proto Electronics. Staff at Proto Electronics have some experience with using the software, but are not responsible for their maintenance. If you have any queries regarding the set-up of the software you are welcome to contact Proto Electronics for advice, but Proto are not responsible for any compatibility issues that may occur during their use.