

Indoor LED Sign Instruction Manual



Proto Electronics
382 Montreal Street Christchurch
☎ (03) 3653366 🖥 www.proto.co.nz




Contents


Introduction.....	2
Initial software Installation	3
Display Configuration	4
Editing and configuring text.....	5
Adding a clock.....	5
Adding multiple text fields.....	6
Adding Images and video.....	7
Connecting to display via WiFi.....	7
Exporting text and graphics to the display (Using USB)	8


Introduction

Thank you for your purchase of your multicolour LED indoor display. This instruction manual covers the software installation, text/graphic editing and uploading to the display. The manual assumes the user has access to a PC running Microsoft Windows.

Please observe the following during installation;

 The display is intended for indoor use only. The display is not sealed against water ingress and water damage is not covered by the product warranty.

 The display must be mounted to an internal wall stud which is able to support at least double the mass of the display.

 The display panel contains high voltage and no user serviceable parts inside. If servicing is needed return to Proto Electronics for repair.

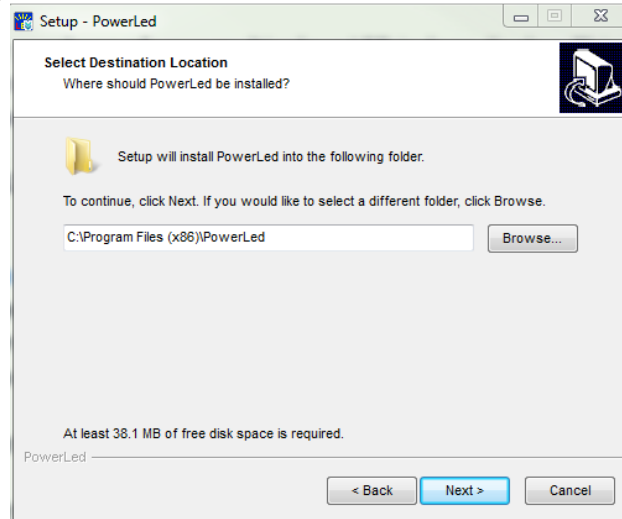
 Please retain the software in a safe place as future software builds may not support older units.

For further product support please contact Proto Electronics NZ (Ltd)

Initial software Installation

To edit the messages and graphics on the Proto Electronics LED display the supplied software must be installed on a Microsoft Windows XP or later PC. The installer PowerLed_2.80.0.exe [1], is located in the root of the USB flash drive supplied with the display.

1. Installation directory

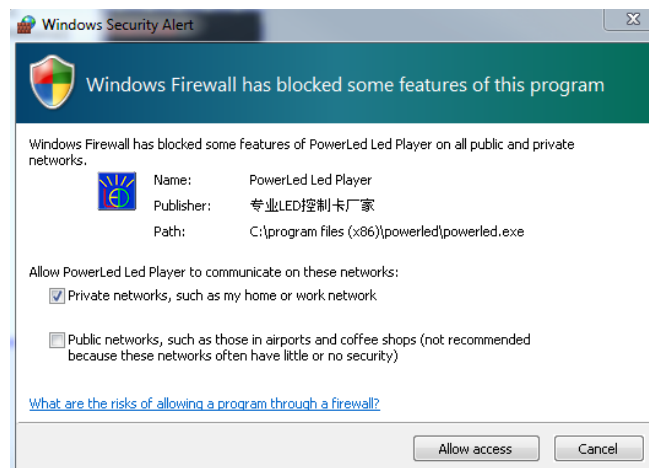


It is recommended that the software be installed to the default directory. In addition make sure Windows Account control (UAC) is set to Administrator to allow the installation.

[1] PowerLed_2.80.0.exe is the most recent version of the controller software at time of printing. Newer versions may be available in future. Contact Proto Electronics for an updated user guide if you are using a newer software version.

2. Opening Program

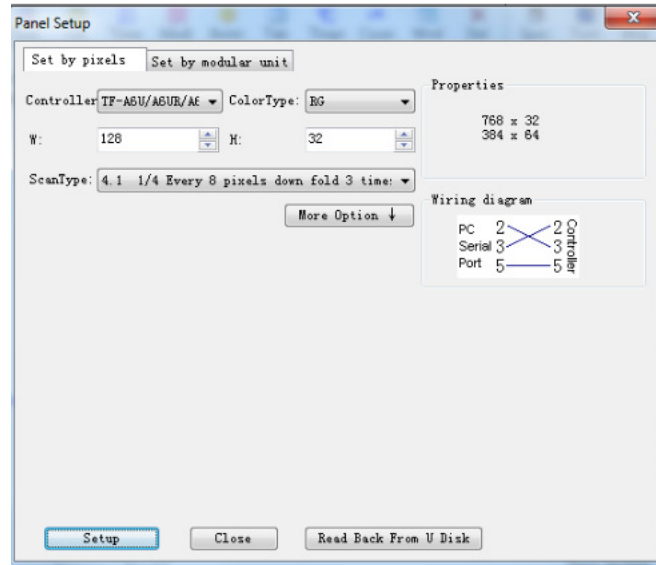
Once the installation is complete the program PowerLed should launch automatically, if you see a Windows Firewall message appear as per below, click **Allow access**. PowerLed needs network access for models which allow WiFi display upload.



Display Configuration

Once the software has been successfully installed the program must be configured to match the resolution and media card used in the display.

Go to **Tools-> Panel Setup**. Then type in **168** as the password.

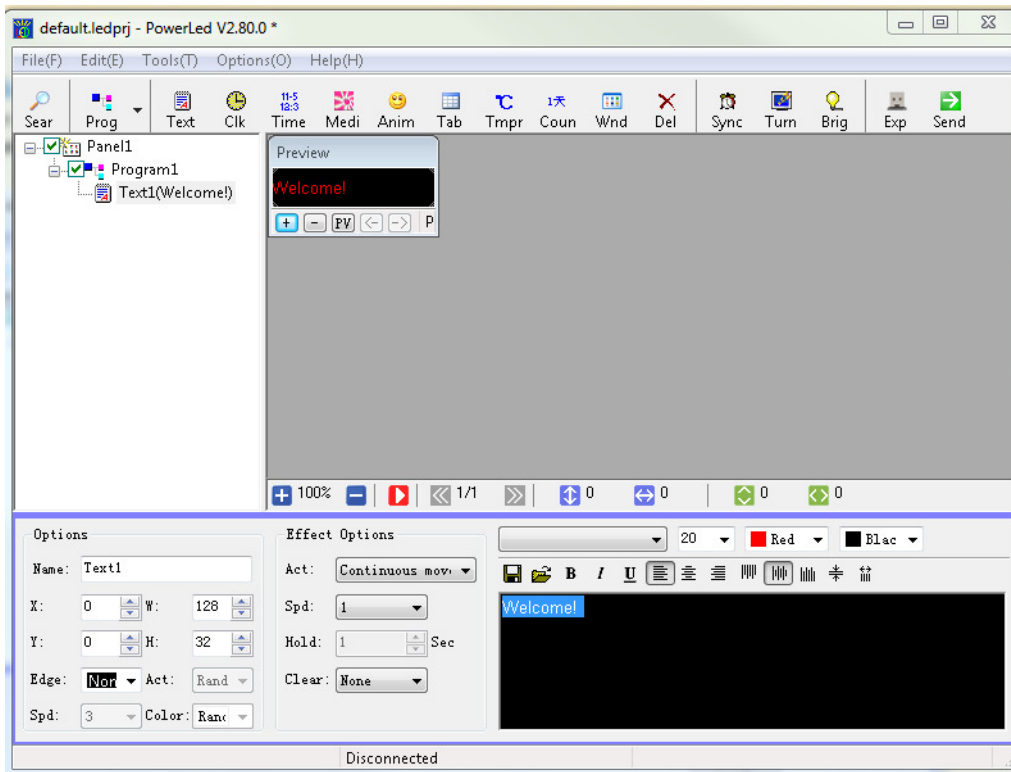


Enter the values that are printed on the sticker located at the rear of the display panel. These are the width in pixels (**W**), height in pixels (**H**) and **Controller**. Leave the ScanType and ColorType values with their defaults. Click the **Setup** button^[2] then click **Close**.

[2] If you receive an error message "parameters has saved, but failed on send to Controller:Timeout", ignore the message and proceed by closing the error.

Editing and configuring text

After completing the media card configuration you are now ready to upload text. Click on **Panel1->Program1->Text1**.



Ensure the **W** and **H** in the **Options** field match the size in pixels marked on the rear of your display.

Under the **Effects Options** you can edit the text and experiment with other text effects such as scrolling, flashing and shuttering. Once you have finished editing the text, click on the **red play** button, a preview will appear in the Preview window, click the **red stop** button and edit text and effects if required.

Adding a clock

Right click on **Program1** and select **Add Program** right click on **Program2** and select **Add Clock** for an analogue clock or **Datetime** for a digital clock. Select the options as required in the **Options** dialogue box for digital or **Dial plate** for analogue.

Due to the aspect ratio of the display it is recommended that the **W** and **H** pixel values are matched to give the best utilization of display area, when using an analogue clock.

The clock does not auto update for daylight saving time. Therefore during each daylight saving event the Export to USB must be undertaken to re-sync the internal real time clock. The clock time is retained even when switched off by an internal battery. The battery life is up to 10 years.

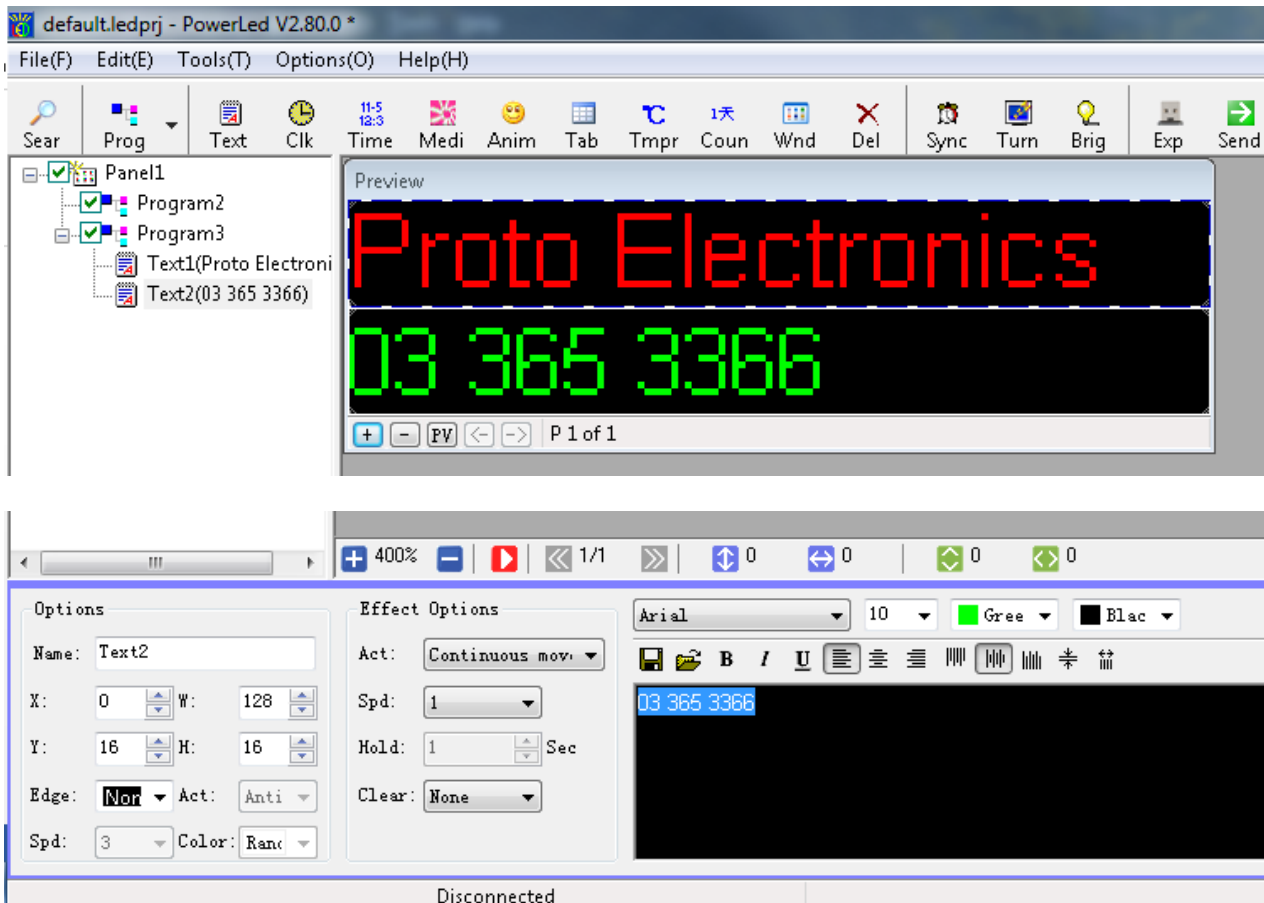
Adding multiple text fields

Right click on **Program1** and select **Add Program** right click on **Program2** and select **Add RTF**, right click again and select **Add RTF**. You should now have two text boxes named Text1 and Text2.

In the **Options** for **Text1**, change the **H** to equal $\frac{1}{2}$ of the screen height in pixels, for example if the screen is 32 pixels high enter 16.

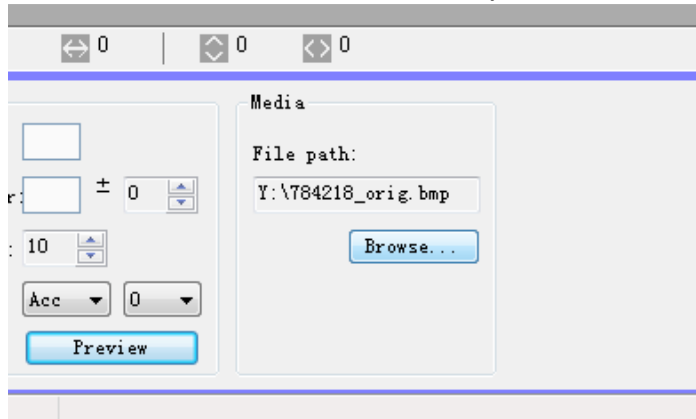
In the **Options** for **Text2**, change the **Y & H** to equal $\frac{1}{2}$ of the screen height in pixels, for example if the screen is 32 pixels high enter 16.

Each text window operates independently of the other. This means each half can have different fonts, colors and fading effects. Click on the **Program2** in the Panel field and press the **red play** button to preview the interaction between the two text fields.



Adding Images and video

Right click on **Program1** and select **Add Program** right click on **Program2** and select **Add Media**. In the File path click **Browse** locate the directory where the file is located.



For best results it is highly recommended that the resolution of the graphic file matches that of the screen, other aspect ratios can cause poor image rendering and look distorted.

Video can be uploaded in the same manner expect instead of the graphics file a video file is uploaded. Since the display has limited memory the video length should not exceed a few minutes.

Connecting to display via WiFi

Not all displays support WiFi download ensure your display supports this mode by checking that it has an external antenna attached if not use USB download mode.

Search for Wifi Network

In the Windows open the WiFi network connection properties. Click to join the TF-WiFi xxx network, the network should shows as an open network if a password is requested enter 88888888^[2].


[2] Since most computers don't allow connections to multiple WiFi networks simultaneously. You will not be able to access other network devices while the display is connected to the WiFi.



Once Windows shows the WiFi has successfully connected, click the **Search** button

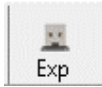
The display panel should show as connected, click **ok**.

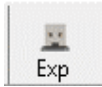
Now edit the text/video and graphics as required.

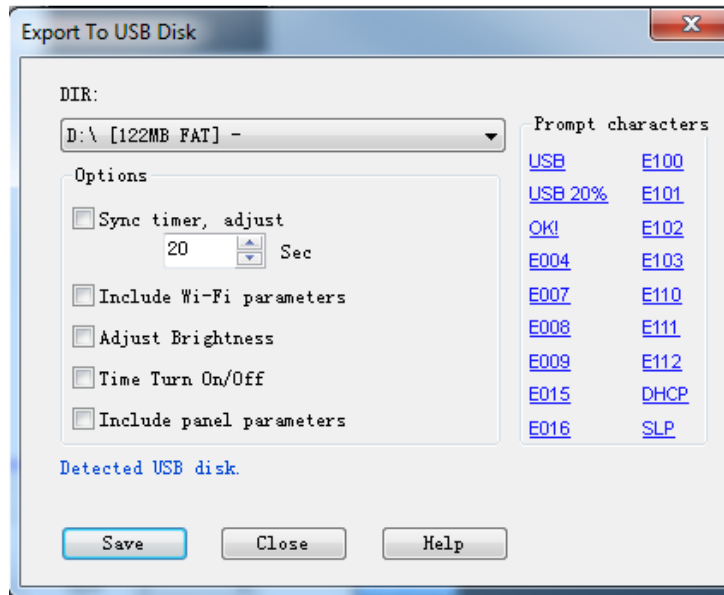
Press  to upload the completed file to the display.

Finally disconnect from the TF-WiFi xx network using windows and reconnect to your normal WiFi network.

Exporting text and graphics to the display (Using USB)



Once editing is complete Click the  icon on the main tool bar, the following dialogue will appear.



If you have a clock included in the display, click **Sync timer, adjust**
Ensure the **DIR** matches the drive letter of the USB key supplied with the display^[3].
Click the **Save** button, the message “Save project succeeded” should appear.
Now safely remove hardware in Windows to unmount the USB drive.

[3] Although it is possible to use another USB drive to upload the data to the display the drive must be formatted to be the FAT file system NTFS and other formats are not supported and will cause errors. The USB drive supplied has been preformatted to FAT.

The USB port is located on the side of the display underneath the protective dust cover.



With the display powered on plug the USB drive into the USB port the display will automatically upload the newly created graphics or text, unplug the display once the new message upload has completed.